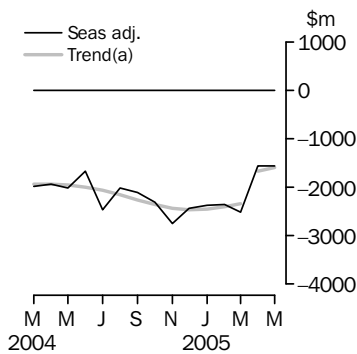


# INTERNATIONAL TRADE IN GOODS AND SERVICES

AUSTRALIA

EMBARGO: 11.30AM (CANBERRA TIME) MON 4 JUL 2005

## Balance on goods and services



(a) A trend break of \$600m has been applied to April 2005.

## KEY FIGURES

	March 2005	April 2005	May 2005	Apr 05 to May 05
	\$m	\$m	\$m	% change
<b>TREND</b>				
Balance on goods & services	-2 340	-1 672	-1 596	..
Credits (exports of goods & services)	13 603	14 365	14 516	1
Debits (imports of goods & services)	15 943	16 037	16 112	-
<b>SEASONALLY ADJUSTED</b>				
Balance on goods & services	-2 508	-1 558	-1 556	..
Credits (exports of goods & services)	13 355	14 484	14 727	2
Debits (imports of goods & services)	15 863	16 042	16 283	2

.. not applicable

— nil or rounded to zero (including null cells)

## KEY POINTS

### TREND ESTIMATES

- The provisional trend estimate of the balance on goods and services was a deficit of \$1,596m in May 2005, a decrease of \$76m on the deficit in April.
- Goods and services credits rose \$151m (1%) to \$14,516m. Non-rural and other goods rose \$155m (2%) and rural goods rose \$14m (1%). Services credits fell \$18m (1%).
- Goods and services debits rose \$75m to \$16,112m. Intermediate and other goods rose \$63m (1%) and capital goods rose \$38m (1%), while consumption goods fell \$11m. Services debits fell \$15m.

### SEASONALLY ADJUSTED ESTIMATES

- In seasonally adjusted terms, the balance on goods and services was a deficit of \$1,556m in May, a marginal decrease of \$2m on the deficit in April.
- Goods and services credits rose \$243m (2%) to \$14,727m. Non-rural and other goods rose \$218m (2%), and rural goods rose \$8m. Services credits rose \$17m (1%).
- Goods and services debits rose \$241m (2%) to \$16,283m. Intermediate and other goods rose \$222m (4%), consumption goods rose \$26m (1%) and capital goods rose \$1m. Services debits fell \$8m.

### ORIGINAL ESTIMATES

- In original terms, the May balance on goods and services was a deficit of \$1,336m, a decrease of \$206m on the deficit in April. Goods and services credits rose \$401m (3%) and goods and services debits rose \$195m (1%).
- In the eleven months to May, exports of non-rural and other goods were up \$15.1b (20%) and rural goods were up \$1.6b (7%) on the corresponding period in 2003-04.

## INQUIRIES

For further information about these and related statistics, contact the National Information and Referral Service on 1300 135 070 or Tom Jebbink on Canberra (02) 6252 5540.

# NOTES

## FORTHCOMING ISSUES

ISSUE	RELEASE DATE
June 2005	2 August 2005
July 2005	30 August 2005
August 2005	4 October 2005
September 2005	3 November 2005
October 2005	30 November 2005
November 2005	10 January 2006



## REVISIONS

Revisions were made to incorporate the latest available data relating to merchandise trade and the quarterly Survey of International Trade in Services. In original terms, these revisions have increased the deficit on goods and services for the ten months to April 2005 by \$229m.

## FEATURE ARTICLE

A feature article providing updated information on export and import currencies will be released on the ABS web site <<http://www.abs.gov.au>> with the June issue of this publication.

This article will identify the major invoice currencies used for Australia's exports and imports and analyse any changes in their composition over the last five calendar years. Additionally, for the five quarters from March quarter 2004 to March quarter 2005, the article will examine currency invoices for major commodities and commodity groups, classified to the Standard International Trade Classification (SITC Rev 3).

Similar articles have appeared in the March quarter 1998, March quarter 2001 and March quarter 2003 issues of *International Merchandise Trade, Australia* (ABS cat. no. 5422.0). To access these articles on the web site select: *Themes* then *Economy* then *International Trade* then *Topics of Interest*.

## TREND ESTIMATES

As advised in the previous issue of this publication, an estimated trend break correction of \$600m has been applied in April 2005 as a result of the significant increase in the price of some non-rural export commodities. Once a minimum of three months data after the trend break are available, the size of the trend break will be measured using time series techniques and may be revised.

Susan Linacre  
Acting Australian Statistician

# CONTENTS

page

Tables on AusStats	4
--------------------	---

## ANALYSIS

Analysis and comments	5
-----------------------	---

## TABLES

### INTERNATIONAL TRADE IN GOODS AND SERVICES – BALANCE OF PAYMENTS BASIS

<b>1</b> Goods and services, summary, seasonally adjusted and trend estimates	10
<b>2</b> Goods and services, summary, original	11
<b>3</b> Goods credits, original	12
<b>4</b> Goods debits, original	13
<b>5</b> Services, summary, original	14
<b>6</b> Services, summary, seasonally adjusted and trend estimates	15
<b>7</b> Services, original, quarterly	16

### INTERNATIONAL MERCHANDISE TRADE – RECORDED TRADE BASIS

<b>8</b> International merchandise exports, by commodity	17
<b>9</b> International merchandise imports, by commodity	20
<b>10</b> International merchandise trade, by country and country groups	23
<b>11</b> International merchandise trade, by state	24

### OTHER TABLES

<b>12</b> Period average exchange rates per Australian dollar	25
---	----

## OTHER INFORMATION

Explanatory Notes	26
Appendix – Related articles	29

## TABLES ON AUSSTATS

### TABLES AVAILABLE ON AUSSTATS

Data available on the ABS web site <<http://www.abs.gov.au>> include:

- longer time series of all tables contained in this publication
- additional tables listed below:

Tables 21 to 36 inclusive are updated on annual basis - with the March issue for calendar year and with the September issue for financial year.

13 Merchandise exports by Broad Economic Category (BEC)

14 Merchandise exports by industry of origin (ANZSIC)

15 Merchandise imports by Broad Economic Category (BEC)

16 Merchandise imports by Balance of Payments Broad Economic Category (BoPBEC)

17 Merchandise imports by industry of origin (ANZSIC)

18 Merchandise exports, state by country and country groups

19 Merchandise imports, state by country and country groups

20 Monthly forward seasonal adjustment factors

21 International trade in services, credits, state by financial year

22 International trade in services, credits, financial year by state

23 International trade in services, debits, state by financial year

24 International trade in services, debits, financial year by state

25 International trade in services, credits, state by calendar year

26 International trade in services, credits, calendar year by state

27 International trade in services, debits, state by calendar year

28 International trade in services, debits, calendar year by state

29 International trade in services, credits, financial year by country and service

30 International trade in services, credits, service by financial year and by country

31 International trade in services, credits, calendar year by country and service

32 International trade in services, credits, service by calendar year and by country

33 International trade in services, debits, financial year by country and service

34 International trade in services, debits, service by financial year and by country

35 International trade in services, debits, calendar year by country and service

36 International trade in services, debits, service by calendar year and by country.

## ANALYSIS AND COMMENTS

### BALANCE ON GOODS AND SERVICES

The trend estimate of the balance on goods and services in May 2005 was a deficit of \$1,596m, a decrease of \$76m on the deficit in April.

In seasonally adjusted terms, the balance on goods and services in May 2005 was a deficit of \$1,556m, a marginal decrease of \$2m on the deficit in April.

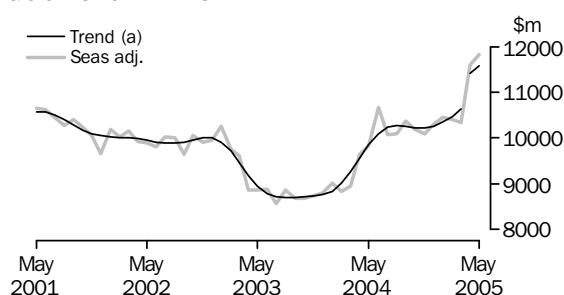
### EXPORTS OF GOODS AND SERVICES

The trend estimate of goods and services credits rose \$151m (1%) between April and May to \$14,516m.

In seasonally adjusted terms, goods and services credits rose \$243m (2%) to \$14,727m. Non-rural and other goods rose \$218m (2%), rural goods rose \$8m and services credits rose \$17m (1%).

#### *Exports of goods*

### GOODS CREDITS



(a) A trend break of \$600m has been applied to April 2005.

### RURAL GOODS

The trend estimate of rural goods exports rose \$14m (1%) to \$2,055m.

In seasonally adjusted terms, exports of rural goods rose \$8m to \$2,097m.

In original terms, exports of rural goods rose \$125m (6%) to \$2,221m.

The main movement in the original series contributing to the rise in seasonally adjusted terms was wool and sheepskins, up \$39m (17%), in contrast to an average April to May fall of 2% over the previous three years.

Offsetting this effect were:

- other rural, up \$83m (9%), compared with an average April to May rise of 16% over the previous three years
- cereal grains and cereal preparations, down \$52m (14%), compared with an average April to May fall of (4%) over the previous three years
- meat and meat preparations, up \$55m (9%), compared with an average April to May rise of (12%) over the previous three years.

## ANALYSIS AND COMMENTS *continued*

### Exports of goods *continued*

#### NON-RURAL AND OTHER GOODS

The trend estimate of non-rural and other goods exports rose \$155m (2%) to \$9,525m.

In seasonally adjusted terms, exports of non-rural and other goods rose \$218m (2%) to \$9,729m.

In original terms, exports of non-rural and other goods rose \$512m (5%) to \$9,929m.

Movements in the original series contributing to the rise in seasonally adjusted terms were:

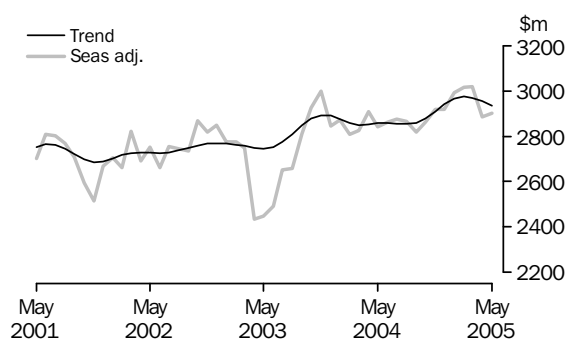
- other goods, up \$258m (42%), compared with an average April to May rise of 8% over the previous three years (largely driven by increased volumes of non-monetary gold between April and May)
- other non-rural, up \$132m (16%), compared with an average April to May rise of 1% over the previous three years
- coal, coke and briquettes, up \$96m (5%), compared with an average April to May rise of 2% over the previous three years
- other mineral fuels, up \$43m (4%), in contrast to an average April to May fall of 1% over the previous three years.

Partly offsetting these effects were:

- metals (excluding gold), down \$151m (18%), in contrast to an average April to May rise of 5% over the previous three years
- transport equipment, down \$92m (17%), in contrast to an average April to May rise of 12% over the previous three years.

### Exports of services

#### SERVICES CREDITS



In trend terms, services credits fell \$18m (1%) to \$2,936m.

Seasonally adjusted, services credits rose \$17m (1%) to \$2,901m.

Movements in the seasonally adjusted component contributing to the rise were:

- travel services, up \$12m (1%)
- other services, up \$11m (1%).

Partly offsetting these effects was other transportation services, down \$5m (1%).

Seasonally adjusted, tourism related services credits rose \$12m (1%) to \$1,787m.

### IMPORTS OF GOODS AND SERVICES

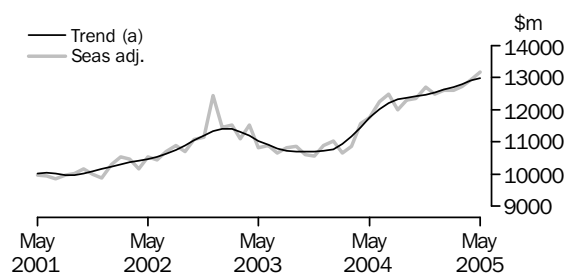
The trend estimate of goods and services debits rose \$75m between April and May to \$16,112m.

In seasonally adjusted terms, goods and services debits rose \$241m (2%) to \$16,283m.

Intermediate and other goods rose \$222m (4%), consumption goods rose \$26m (1%) and capital goods rose \$1m while services debits fell \$8m.

#### *Imports of goods*

#### GOODS DEBITS



(a) Trend estimates exclude abnormal imports of aircraft in December 2002.

#### CONSUMPTION GOODS

The trend estimate of imports of consumption goods fell \$11m to \$4,019m.

In seasonally adjusted terms, imports of consumption goods rose \$26m (1%) to \$3,998m.

In original terms, imports of consumption goods fell \$197m (5%) to \$3,684m.

Movements in the original series contributing to the rise in seasonally adjusted terms were:

- consumption goods n.e.s., up marginally, in contrast to an average April to May fall of 6% over the previous three years
- toys, books and leisure goods, up \$56m (22%), compared with an average April to May rise of 8% over the previous three years.

Partly offsetting these effects were:

- non-industrial transport equipment, down \$128m (11%), in contrast to an average April to May rise of 3% over the previous three years
- food and beverages, down \$33m (7%), compared with an average April to May fall of 1% over the previous three years.

#### CAPITAL GOODS

The trend estimate of imports of capital goods rose \$38m (1%) to \$3,063m.

In seasonally adjusted terms, imports of capital goods rose marginally to \$3,144m.

In original terms, imports of capital goods rose \$369m (13%) to \$3,201m.

Movements in the original series contributing to the marginal rise in seasonally adjusted terms were:

- machinery and industrial equipment, up \$133m (13%), compared with an average April to May rise of 5% over the previous three years
- ADP equipment, up \$79m (16%), compared with an average April to May rise of 1% over the previous three years

## ANALYSIS AND COMMENTS *continued*

### *Imports of goods continued*

#### CAPITAL GOODS *continued*

- civil aircraft, up \$88m, compared with lower April to May rises over the previous three years.

Offsetting these effects were:

- industrial transport equipment n.e.s, up \$45m (10%), compared with an average April to May rise of 42% over the previous three years
- telecommunications equipment, up \$11m (3%), compared with an average April to May rise of 24% over the previous three years.

#### INTERMEDIATE AND OTHER GOODS

The trend estimate of imports of intermediate and other goods rose \$63m (1%) to \$5,906m.

In seasonally adjusted terms, intermediate and other goods imports rose \$222m (4%) to \$6,033m.

In original terms, imports of intermediate and other goods rose \$114m (2%) to \$6,096m.

Movements in the original series contributing to the rise in seasonally adjusted terms were:

- fuels and lubricants, up \$123m (9%), compared with an average April to May rise of 1% over the previous three years (while crude petroleum imports fell in both price and volume terms between April and May, there were large increases in imports of refined petroleum oils)
- other goods, up \$62m (16%), in contrast to an average April to May fall of 8% over the previous three years
- iron and steel, up \$50m (17%), compared with an average April to May rise of 9% over the previous three years
- primary industrial supplies n.e.s., up \$3m (3%), in contrast to an average April to May fall of 13% over the previous three years.

Partly offsetting these effects were:

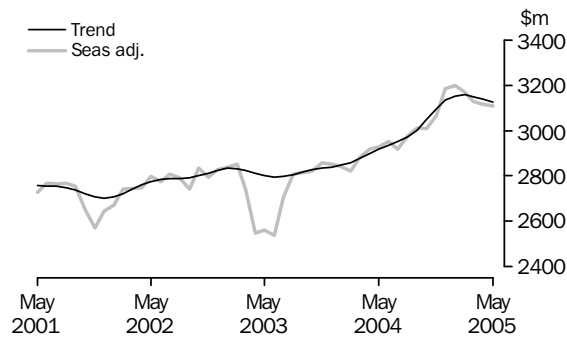
- processed industrial supplies n.e.s., down \$134m (10%), compared with an average April to May fall of 6% over the previous three years
- parts for transport equipment, down \$18m (3%), in contrast to an average April to May rise of 1% over the previous three years.



## ANALYSIS AND COMMENTS *continued*

### Imports of services

### SERVICES DEBITS



In trend terms, services debits fell \$15m to \$3,124m.

Seasonally adjusted, services debits fell \$8m to \$3,108m.

The main movement in the seasonally adjusted component contributing to this fall was freight transportation services, down \$19m (3%).

Partly offsetting this effect was other services, up \$6m (1%).

Seasonally adjusted, tourism related services debits fell \$26m (2%) to \$1,561m.

## GOODS AND SERVICES(a), Summary: Seasonally Adjusted and Trend Estimates

Months	BALANCE	CREDITS					DEBITS					
	On goods and services	Total goods and services	Total goods	Rural goods(b)	Non-rural and other goods(b)	Total services	Total goods and services	Total goods	Con-sumption goods	Capital goods	Inter-mediate and other goods	Total services
	\$m	\$m	\$m	\$m	\$m	\$m	\$m	\$m	\$m	\$m	\$m	\$m
SEASONALLY ADJUSTED												
<b>2004</b>												
March	-1 977	11 771	8 945	2 051	6 894	2 826	-13 748	-10 867	-3 568	-2 634	-4 665	-2 881
April	-1 940	12 543	9 636	2 236	7 400	2 907	-14 483	-11 565	-3 825	-2 663	-5 077	-2 918
May	-2 015	12 666	9 824	2 370	7 454	2 842	-14 681	-11 754	-3 802	-2 771	-5 181	-2 927
June	-1 661	13 539	10 676	2 684	7 992	2 863	-15 200	-12 248	-3 949	-3 066	-5 233	-2 952
July	-2 463	12 954	10 080	2 415	7 665	2 874	-15 417	-12 498	-3 852	-3 184	-5 462	-2 919
August	-2 016	12 952	10 086	2 333	7 753	2 866	-14 968	-11 992	-3 755	-2 912	-5 325	-2 976
September	-2 103	13 197	10 378	2 299	8 079	2 819	-15 300	-12 289	-3 861	-2 876	-5 552	-3 011
October	-2 311	13 051	10 190	2 146	8 044	2 861	-15 362	-12 352	-3 825	-3 074	-5 453	-3 010
November	-2 749	13 005	10 085	2 107	7 978	2 920	-15 754	-12 690	-3 881	-3 124	-5 685	-3 064
December	-2 440	13 233	10 313	2 043	8 270	2 920	-15 673	-12 488	-3 880	-3 009	-5 599	-3 185
<b>2005</b>												
January	-2 363	13 444	10 452	1 998	8 454	2 992	-15 807	-12 608	-4 191	-2 807	-5 610	-3 199
February	-2 358	13 412	10 398	2 072	8 326	3 014	-15 770	-12 603	-4 028	-3 022	-5 553	-3 167
March	-2 508	13 355	10 338	1 943	8 395	3 017	-15 863	-12 733	-4 025	-2 851	-5 857	-3 130
April	-1 558	14 484	11 600	2 089	9 511	2 884	-16 042	-12 926	-3 972	-3 143	-5 811	-3 116
May	-1 556	14 727	11 826	2 097	9 729	2 901	-16 283	-13 175	-3 998	-3 144	-6 033	-3 108
TREND ESTIMATES												
<b>2004</b>												
March	-1 932	12 112	9 263	2 198	7 065	2 849	-14 044	-11 166	-3 632	-2 666	-4 868	-2 878
April	-1 941	12 415	9 563	2 297	7 266	2 852	-14 356	-11 459	-3 717	-2 744	-4 998	-2 897
May	-1 954	12 717	9 860	2 382	7 478	2 857	-14 671	-11 754	-3 791	-2 834	-5 129	-2 917
June	-1 989	12 959	10 099	2 432	7 667	2 860	-14 948	-12 013	-3 840	-2 922	-5 251	-2 935
July	-2 063	13 091	10 235	2 434	7 801	2 856	-15 154	-12 203	-3 854	-2 993	-5 356	-2 951
August	-2 158	13 126	10 272	2 381	7 891	2 854	-15 284	-12 313	-3 844	-3 031	-5 438	-2 971
September	-2 261	13 111	10 252	2 291	7 961	2 859	-15 372	-12 369	-3 838	-3 036	-5 495	-3 003
October	-2 360	13 101	10 223	2 190	8 033	2 878	-15 461	-12 414	-3 860	-3 020	-5 534	-3 047
November	-2 434	13 126	10 216	2 106	8 110	2 910	-15 560	-12 466	-3 908	-2 992	-5 566	-3 094
December	-2 466	13 201	10 259	2 055	8 204	2 942	-15 667	-12 533	-3 962	-2 973	-5 598	-3 134
<b>2005</b>												
January	-2 451	13 317	10 351	2 033	8 318	2 966	-15 768	-12 615	-4 005	-2 969	-5 641	-3 153
February	-2 402	13 452	10 478	2 026	8 452	2 974	-15 854	-12 697	-4 026	-2 973	-5 698	-3 157
March	-2 340	13 603	10 636	2 030	8 606	2 967	-15 943	-12 793	-4 032	-2 993	-5 768	-3 150
April(c)	-1 672	14 365	11 411	2 041	9 370	2 954	-16 037	-12 898	-4 030	-3 025	-5 843	-3 139
May	-1 596	14 516	11 580	2 055	9 525	2 936	-16 112	-12 988	-4 019	-3 063	-5 906	-3 124

(a) For sign conventions, see paragraph 9 of the Explanatory Notes.

(b) For all time periods, estimates for sugar, sugar preparations and honey are included in Non-rural and other goods.

(c) A trend break of \$600m has been applied to Non-rural and other goods credits in April 2005.

## GOODS AND SERVICES(a), Summary: Original

	BALANCE	CREDITS					DEBITS					
	<i>On goods and services</i>	<i>Total goods and services</i>	<i>Total goods</i>	<i>Rural goods(b)</i>	<i>Non-rural and other goods(b)</i>	<i>Total services</i>	<i>Total goods and services</i>	<i>Total goods</i>	<i>Consumption goods</i>	<i>Capital goods</i>	<i>Intermediate and other goods</i>	<i>Total services</i>
	\$m	\$m	\$m	\$m	\$m	\$m	\$m	\$m	\$m	\$m	\$m	\$m
FINANCIAL YEAR												
<b>2001-02</b>	<b>-1 373</b>	153 200	120 950	30 085	90 865	32 250	-154 573	-121 942	-37 422	-27 208	-57 312	-32 631
<b>2002-03</b>	<b>-18 876</b>	148 293	115 800	25 484	90 316	32 493	-167 169	-134 278	-41 228	-31 554	-61 496	-32 891
<b>2003-04</b>	<b>-23 777</b>	143 484	109 504	24 560	84 944	33 980	-167 261	-133 026	-42 916	-32 118	-57 992	-34 235
MONTHS												
<b>2004</b>												
March	<b>-2 278</b>	12 014	9 236	2 139	7 097	2 778	-14 292	-11 529	-3 684	-2 681	-5 164	-2 763
April	<b>-1 732</b>	12 116	9 401	2 202	7 199	2 715	-13 848	-10 986	-3 486	-2 484	-5 016	-2 862
May	<b>-1 392</b>	12 585	10 149	2 519	7 630	2 436	-13 977	-11 166	-3 459	-2 704	-5 003	-2 811
June	<b>-2 534</b>	13 164	10 582	2 607	7 975	2 582	-15 698	-12 728	-3 791	-3 661	-5 276	-2 970
July	<b>-1 969</b>	13 553	10 129	2 379	7 750	3 424	-15 522	-12 462	-3 991	-3 237	-5 234	-3 060
August	<b>-2 264</b>	13 091	10 413	2 300	8 113	2 678	-15 355	-12 345	-3 940	-2 949	-5 456	-3 010
September	<b>-3 359</b>	13 028	10 567	2 293	8 274	2 461	-16 387	-13 121	-4 369	-3 023	-5 729	-3 266
October	<b>-2 530</b>	13 577	10 794	2 269	8 525	2 783	-16 107	-12 918	-4 188	-3 087	-5 643	-3 189
November	<b>-3 594</b>	12 919	10 115	2 137	7 978	2 804	-16 513	-13 506	-4 278	-3 373	-5 855	-3 007
December	<b>-2 167</b>	13 677	10 792	2 147	8 645	2 885	-15 844	-12 663	-3 806	-3 175	-5 682	-3 181
<b>2005</b>												
January	<b>-1 859</b>	12 702	9 287	1 713	7 574	3 415	-14 561	-11 274	-3 717	-2 415	-5 142	-3 287
February	<b>-832</b>	13 220	9 454	2 021	7 433	3 766	-14 052	-11 286	-3 712	-2 478	-5 096	-2 766
March	<b>-2 188</b>	13 390	10 445	2 015	8 430	2 945	-15 578	-12 595	-3 698	-2 849	-6 048	-2 983
April	<b>-1 542</b>	14 217	11 513	2 096	9 417	2 704	-15 759	-12 695	-3 881	-2 832	-5 982	-3 064
May	<b>-1 336</b>	14 618	12 150	2 221	9 929	2 468	-15 954	-12 981	-3 684	-3 201	-6 096	-2 973
FINANCIAL YEAR TO DATE												
<b>11 months ended May</b>												
2004	<b>-21 243</b>	130 320	98 922	21 953	76 969	31 398	-151 563	-120 298	-39 125	-28 457	-52 716	-31 265
2005	<b>-23 640</b>	147 992	115 659	23 591	92 068	32 333	-171 632	-137 846	-43 264	-32 619	-61 963	-33 786

(a) For sign conventions, see paragraph 9 of the Explanatory Notes.

(b) For all time periods, estimates for sugar, sugar preparations and honey are included in Non-rural and other goods.

## GOODS CREDITS: Original

							11 MONTHS ENDED MAY		Change %
	2001-02	2002-03	2003-04	Mar 2005	Apr 2005	May 2005	2004	2005	
	\$m	\$m	\$m	\$m	\$m	\$m	\$m	\$m	
<b>Total goods credits</b>	<b>120 950</b>	<b>115 800</b>	<b>109 504</b>	<b>10 445</b>	<b>11 513</b>	<b>12 150</b>	<b>98 922</b>	<b>115 659</b>	<b>16.9</b>
<b>Rural goods</b>									
Meat and meat preparations	6 246	5 655	5 758	622	609	664	5 146	6 323	22.9
Cereal grains and cereal preparations	6 481	4 487	5 094	364	371	319	4 505	4 868	8.1
Wool and sheepskins	3 687	3 545	2 778	246	235	274	2 503	2 598	3.8
Other rural	13 671	11 797	10 930	783	881	964	9 799	9 802	—
<i>Total rural goods(a)</i>	<i>30 085</i>	<i>25 484</i>	<i>24 560</i>	<i>2 015</i>	<i>2 096</i>	<i>2 221</i>	<i>21 953</i>	<i>23 591</i>	<i>7.5</i>
<b>Non-rural goods</b>									
Metal ores and minerals	14 774	14 523	14 888	1 688	1 971	2 055	13 370	17 607	31.7
Coal, coke and briquettes	13 430	11 987	11 001	1 265	1 756	1 852	9 821	15 122	54.0
Other mineral fuels	10 940	11 049	8 766	968	1 020	1 063	8 056	10 241	27.1
Metals (excl. gold)	9 650	8 711	7 759	718	860	709	6 990	7 936	13.5
Machinery	7 999	7 362	6 839	633	623	676	6 208	6 852	10.4
Transport equipment	5 686	6 273	5 155	426	541	449	4 723	4 471	-5.3
Other manufactures	13 758	13 485	13 276	1 186	1 206	1 295	12 049	12 821	6.4
Other non-rural(a)	7 009	8 234	9 286	950	819	951	8 356	9 725	16.4
<i>Total non-rural goods(a)</i>	<i>83 246</i>	<i>81 624</i>	<i>76 970</i>	<i>7 834</i>	<i>8 796</i>	<i>9 050</i>	<i>69 573</i>	<i>84 775</i>	<i>21.9</i>
<b>Other goods</b>									
<i>Total other goods(b)</i>	<i>7 619</i>	<i>8 692</i>	<i>7 974</i>	<i>596</i>	<i>621</i>	<i>879</i>	<i>7 396</i>	<i>7 293</i>	<i>-1.4</i>

— nil or rounded to zero (including null cells)

(b) Includes non-monetary gold.

(a) For all time periods, estimates for sugar, sugar preparations and honey are included in Other non-rural.

## GOODS DEBITS(a): Original

							11 MONTHS ENDED MAY		Change
	2001-02	2002-03	2003-04	Mar 2005	Apr 2005	May 2005	2004	2005	
	\$m	\$m	\$m	\$m	\$m	\$m	\$m	\$m	
<b>Total goods debits</b>	<b>-121 942</b>	<b>-134 278</b>	<b>-133 026</b>	<b>-12 595</b>	<b>-12 695</b>	<b>-12 981</b>	<b>-120 298</b>	<b>-137 846</b>	<b>14.6</b>
Consumption goods									
Food and beverages, mainly for consumption	-4 687	-5 067	-5 167	-469	-480	-447	-4 730	-5 302	12.1
Household electrical items	-3 166	-3 657	-3 793	-273	-305	-292	-3 465	-3 742	8.0
Non-industrial transport equipment	-9 930	-11 302	-12 326	-1 069	-1 209	-1 081	-11 150	-11 767	5.5
Textiles, clothing and footwear	-4 849	-5 237	-5 078	-428	-482	-401	-4 675	-5 410	15.7
Toys, books and leisure goods	-3 494	-3 740	-3 593	-244	-256	-312	-3 267	-3 438	5.2
Consumption goods n.e.s.	-11 296	-12 225	-12 959	-1 215	-1 149	-1 151	-11 838	-13 605	14.9
<i>Total consumption goods</i>	<i>-37 422</i>	<i>-41 228</i>	<i>-42 916</i>	<i>-3 698</i>	<i>-3 881</i>	<i>-3 684</i>	<i>-39 125</i>	<i>-43 264</i>	<i>10.6</i>
Capital goods									
Machinery and industrial equipment	-9 502	-11 007	-11 064	-1 048	-1 056	-1 189	-9 974	-12 352	23.8
ADP equipment	-5 055	-4 908	-5 138	-528	-494	-573	-4 517	-5 135	13.7
Telecommunications equipment	-3 643	-3 619	-4 105	-367	-348	-359	-3 680	-4 167	13.2
Civil aircraft	-1 513	-3 887	-3 061	-137	-108	-196	-2 465	-2 146	-12.9
Industrial transport equipment n.e.s.	-3 613	-3 881	-4 144	-367	-433	-478	-3 677	-4 499	22.4
Capital goods n.e.s.	-3 882	-4 252	-4 606	-402	-393	-406	-4 144	-4 320	4.2
<i>Total capital goods</i>	<i>-27 208</i>	<i>-31 554</i>	<i>-32 118</i>	<i>-2 849</i>	<i>-2 832</i>	<i>-3 201</i>	<i>-28 457</i>	<i>-32 619</i>	<i>14.6</i>
Intermediate and other merchandise goods									
Food and beverages, mainly for industry	-577	-736	-625	-55	-52	-59	-573	-601	4.9
Primary industrial supplies n.e.s.	-1 117	-1 220	-1 079	-100	-88	-91	-1 006	-962	-4.4
Fuels and lubricants	-8 823	-10 393	-9 917	-1 399	-1 372	-1 495	-8 975	-13 330	48.5
Parts for transport equipment	-6 827	-7 258	-6 548	-632	-634	-616	-5 979	-6 434	7.6
Parts for ADP equipment	-2 159	-2 011	-1 812	-152	-150	-160	-1 626	-1 628	0.1
Other parts for capital goods	-8 216	-8 605	-8 553	-815	-755	-807	-7 700	-8 686	12.8
Organic and inorganic chemicals	-3 447	-3 089	-3 048	-366	-318	-345	-2 757	-3 352	21.6
Paper and paperboard	-2 225	-2 326	-2 242	-193	-186	-175	-2 063	-2 133	3.4
Textile yarn and fabrics	-1 830	-1 839	-1 576	-107	-107	-114	-1 432	-1 337	-6.6
Iron and steel	-1 765	-1 960	-2 026	-290	-290	-340	-1 850	-2 751	48.7
Plastics	-2 182	-2 478	-2 177	-208	-201	-190	-1 992	-2 243	12.6
Processed industrial supplies n.e.s.	-11 441	-12 238	-12 029	-1 211	-1 284	-1 150	-10 949	-12 858	17.4
Other merchandise goods	-1 563	-1 710	-1 234	-68	-154	-101	-1 156	-991	-14.3
<i>Total intermediate and other merchandise goods</i>	<i>-52 172</i>	<i>-55 863</i>	<i>-52 866</i>	<i>-5 596</i>	<i>-5 591</i>	<i>-5 643</i>	<i>-48 058</i>	<i>-57 306</i>	<i>19.2</i>
Other goods									
<i>Total other goods(b)</i>	<i>-5 140</i>	<i>-5 633</i>	<i>-5 126</i>	<i>-452</i>	<i>-391</i>	<i>-453</i>	<i>-4 658</i>	<i>-4 657</i>	<i>—</i>

— nil or rounded to zero (including null cells)

(b) Includes non-monetary gold.

(a) For sign conventions, see paragraph 9 of the Explanatory Notes.

SERVICES (a)(b), Summary: **Original**

	11 MONTHS ENDED MAY								
	2001-02	2002-03	2003-04	Mar 2005	Apr 2005	May 2005	2004	2005	Change
	\$m	\$m	\$m	\$m	\$m	\$m	\$m	\$m	%
<b>Credits</b>									
Freight	1 001	920	830	61	62	62	757	721	-4.8
Other transportation	6 664	6 538	6 772	624	561	557	6 218	6 671	7.3
Travel	15 645	15 452	17 108	1 503	1 288	1 055	15 939	16 351	2.6
Other services	8 940	9 583	9 270	757	793	794	8 484	8 590	1.2
<b>Total services credits</b>	<b>32 250</b>	<b>32 493</b>	<b>33 980</b>	<b>2 945</b>	<b>2 704</b>	<b>2 468</b>	<b>31 398</b>	<b>32 333</b>	<b>3.0</b>
<b>Debits</b>									
Freight	-5 626	-5 808	-6 056	-605	-641	-613	-5 501	-6 928	25.9
Other transportation	-5 150	-5 152	-5 578	-452	-450	-454	-5 043	-5 151	2.1
Travel	-10 918	-11 012	-12 136	-1 074	-1 137	-1 071	-11 104	-12 360	11.3
Other services	-10 937	-10 919	-10 465	-852	-836	-835	-9 617	-9 347	-2.8
<b>Total services debits</b>	<b>-32 631</b>	<b>-32 891</b>	<b>-34 235</b>	<b>-2 983</b>	<b>-3 064</b>	<b>-2 973</b>	<b>-31 265</b>	<b>-33 786</b>	<b>8.1</b>
<b>Memorandum items:</b>									
Tourism related service credits(c)	19 800	19 503	21 081	1 866	1 585	1 348	19 619	20 160	2.8
Tourism related service debits(c)	-15 577	-15 691	-17 258	-1 483	-1 539	-1 477	-15 732	-17 026	8.2

(a) For sign conventions, see paragraph 9 of the Explanatory Notes.

(b) For more detailed trade in services by commodity, see table 7.

(c) For a more detailed explanation of tourism related services, see paragraphs 15 and 16 of the Explanatory Notes.

SERVICES (a), Summary: **Seasonally Adjusted and Trend Estimates**

	Aug 2004	Sep 2004	Oct 2004	Nov 2004	Dec 2004	Jan 2005	Feb 2005	Mar 2005	Apr 2005	May 2005
	\$m	\$m	\$m	\$m	\$m	\$m	\$m	\$m	\$m	\$m

## SEASONALLY ADJUSTED

**Credits**

Freight	69	70	68	65	65	63	64	64	63	62
Other transportation	604	579	606	613	619	610	602	612	600	595
Travel	1 437	1 407	1 382	1 450	1 435	1 530	1 546	1 540	1 449	1 461
Other services	756	763	805	792	801	789	802	801	772	783
<b>Total services credits</b>	<b>2 866</b>	<b>2 819</b>	<b>2 861</b>	<b>2 920</b>	<b>2 920</b>	<b>2 992</b>	<b>3 014</b>	<b>3 017</b>	<b>2 884</b>	<b>2 901</b>

**Debits**

Freight	-566	-625	-623	-653	-666	-704	-649	-594	-632	-613
Other transportation	-467	-482	-472	-481	-498	-479	-494	-475	-457	-459
Travel	-1 051	-1 080	-1 089	-1 110	-1 186	-1 155	-1 148	-1 180	-1 159	-1 162
Other services	-892	-824	-826	-820	-835	-861	-876	-881	-868	-874
<b>Total services debits</b>	<b>-2 976</b>	<b>-3 011</b>	<b>-3 010</b>	<b>-3 064</b>	<b>-3 185</b>	<b>-3 199</b>	<b>-3 167</b>	<b>-3 130</b>	<b>-3 116</b>	<b>-3 108</b>

**Memorandum items:**

Tourism related service credits(b)	1 785	1 739	1 677	1 793	1 800	1 886	1 909	1 892	1 775	1 787
Tourism related service debits(b)	-1 482	-1 525	-1 517	-1 551	-1 638	-1 597	-1 596	-1 609	-1 587	-1 561

## TREND ESTIMATES

**Credits**

Freight	71	69	67	66	65	64	64	63	63	63
Other transportation	598	600	604	608	610	611	609	606	602	599
Travel	1 417	1 416	1 424	1 444	1 470	1 493	1 506	1 507	1 502	1 490
Other services	768	774	783	792	797	798	795	791	787	784
<b>Total services credits</b>	<b>2 854</b>	<b>2 859</b>	<b>2 878</b>	<b>2 910</b>	<b>2 942</b>	<b>2 966</b>	<b>2 974</b>	<b>2 967</b>	<b>2 954</b>	<b>2 936</b>

**Debits**

Freight	-597	-616	-636	-652	-661	-659	-649	-637	-625	-614
Other transportation	-469	-472	-477	-483	-487	-485	-481	-475	-469	-462
Travel	-1 064	-1 079	-1 100	-1 123	-1 143	-1 156	-1 163	-1 166	-1 168	-1 167
Other services	-841	-836	-834	-836	-843	-853	-864	-872	-877	-881
<b>Total services debits</b>	<b>-2 971</b>	<b>-3 003</b>	<b>-3 047</b>	<b>-3 094</b>	<b>-3 134</b>	<b>-3 153</b>	<b>-3 157</b>	<b>-3 150</b>	<b>-3 139</b>	<b>-3 124</b>

**Memorandum items:**

Tourism related service credits(b)	1 753	1 749	1 759	1 785	1 817	1 845	1 858	1 855	1 844	1 823
Tourism related service debits(b)	-1 487	-1 507	-1 535	-1 566	-1 588	-1 599	-1 601	-1 598	-1 592	-1 583

(a) For sign conventions, see paragraph 9 of the Explanatory Notes.

(b) For a more detailed explanation of tourism related services, see paragraphs 15 and 16 of the Explanatory Notes.

	CREDITS				DEBITS			
	<i>Jun Qtr</i>	<i>Sep Qtr</i>	<i>Dec Qtr</i>	<i>Mar Qtr</i>	<i>Jun Qtr</i>	<i>Sep Qtr</i>	<i>Dec Qtr</i>	<i>Mar Qtr</i>
	2004	2004	2004	2005	2004	2004	2004	2005
	\$m	\$m	\$m	\$m	\$m	\$m	\$m	\$m
<b>Services</b>	<b>7 733</b>	<b>8 563</b>	<b>8 472</b>	<b>10 126</b>	<b>-8 643</b>	<b>-9 336</b>	<b>-9 377</b>	<b>-9 036</b>
Transportation services								
Passenger(c)	1 679	1 768	1 901	1 884	-1 297	-1 293	-1 190	-1 090
Freight	221	210	204	183	-1 622	-1 834	-2 020	-1 820
Other(c)	np	np	np	np	-206	-217	-223	-234
<i>Total transportation services</i>	<i>1 900</i>	<i>1 978</i>	<i>2 105</i>	<i>2 067</i>	<i>-3 125</i>	<i>-3 344</i>	<i>-3 433</i>	<i>-3 144</i>
Travel services								
Business	302	285	287	319	-700	-763	-715	-791
Personal								
Education-related	885	1 614	693	2 573	-142	-234	-152	-172
Other	2 293	2 453	2 901	2 883	-2 190	-2 469	-2 459	-2 397
Total personal	3 178	4 067	3 594	5 456	-2 332	-2 703	-2 611	-2 569
<i>Total travel services</i>	<i>3 480</i>	<i>4 352</i>	<i>3 881</i>	<i>5 775</i>	<i>-3 032</i>	<i>-3 466</i>	<i>-3 326</i>	<i>-3 360</i>
Communication services(d)	183	208	202	193	-205	-189	-187	-164
Construction services	27	21	20	16	—	—	—	—
Insurance services	173	171	171	171	-220	-218	-218	-218
Financial services	248	251	251	251	-146	-146	-146	-146
Computer and information services	297	289	320	263	-256	-266	-286	-238
Royalties and license fees	172	138	183	138	-456	-485	-535	-499
Other business services								
Merchanting and other trade-related	206	156	182	143	-55	-56	-58	-58
Operational leasing	5	5	4	4	-192	-186	-173	-169
Miscellaneous business, professional and technical								
Legal, accounting, management consulting and public relations	128	115	113	114	-76	-84	-79	-65
Advertising, market research and public opinion polling	22	22	30	26	-53	-26	-27	-38
Research and development	88	77	105	107	-42	-37	-41	-34
Architectural, engineering and other technical services	127	97	120	148	-97	-104	-91	-108
Agriculture, mining and on-site processing	31	30	30	27	-22	-24	-23	-14
Services between affiliated enterprises n.i.e.	245	245	340	239	-209	-180	-266	-208
Other	72	92	105	101	-70	-74	-81	-82
Total miscellaneous business, professional and technical	713	678	843	762	-569	-529	-608	-549
<i>Total other business services</i>	<i>924</i>	<i>839</i>	<i>1 029</i>	<i>909</i>	<i>-816</i>	<i>-771</i>	<i>-839</i>	<i>-776</i>
Personal, cultural and recreational services								
Audiovisual and related services	26	27	25	44	-152	-247	-160	-227
Other personal, cultural and recreational services	72	78	78	79	-25	-30	-57	-81
<i>Total other personal, cultural and recreational services</i>	<i>98</i>	<i>105</i>	<i>103</i>	<i>123</i>	<i>-177</i>	<i>-277</i>	<i>-217</i>	<i>-308</i>
Government services n.i.e.	231	211	207	220	-210	-174	-190	-183
<b>Memorandum items:</b>								
Tourism related services(e)	4 376	5 365	4 986	6 876	-4 408	-4 849	-4 610	-4 551

— nil or rounded to zero (including null cells)

np not available for publication but included in totals where applicable, unless otherwise indicated

(a) For sign conventions, see paragraph 9 of Explanatory Notes.

(b) For more information see paragraphs 13 and 14 of the Explanatory Notes.

(c) Passenger transportation credits include other transportation services credits.

(d) Communications services includes other services n.i.e..

(e) For a more detailed explanation of tourism related services, see paragraphs 15 and 16 of the Explanatory Notes.



				Per cent of total merchandise exports(a)	11 MONTHS ENDED MAY	
	Mar 2005	Apr 2005	May 2005		2004	2005
	\$m	\$m	\$m	%	\$m	\$m
MAJOR COMMODITIES						
011 Meat of bovine animals	430	422	451	3.7	3 490	4 458
041 Wheat	234	187	205	1.7	2 997	3 198
268 Wool and other animal hair	218	205	239	2.0	2 246	2 278
281 Iron ore and concentrates	625	871	967	8.0	4 733	7 011
285 Aluminium ore and concentrates	374	429	370	3.1	3 376	4 012
321 Coal, not agglomerated	1 260	1 731	1 850	15.3	9 758	15 041
333 Crude petroleum oils	483	569	555	4.6	4 255	5 213
334 Refined petroleum oils	245	164	236	2.0	1 841	2 189
343 Natural gas	277	288	306	2.5	1 982	2 930
684 Aluminium	248	464	347	2.9	3 405	3 803
781 Passenger motor vehicles	250	224	302	2.5	2 652	2 494
971 Gold, non-monetary	368	433	654	5.4	5 292	5 298

## SECTION AND DIVISION OF THE SITC

0	Food and live animals(b)					
00	Live animals other than fish, crustaceans, molluscs and aquatic invertebrates	55	70	58	0.5	786 734
01	Meat and meat preparations	622	609	664	5.5	5 145 6 322
02	Dairy products and birds' eggs	198	187	187	1.5	1 942 2 154
03	Fish (not marine mammals), crustaceans, molluscs and aquatic invertebrates, and preparations thereof(b)	92	114	117	1.0	1 211 1 137
04	Cereals and cereal preparations(b)	364	371	319	2.6	4 505 4 868
05	Vegetables and fruit	95	107	111	0.9	1 127 1 155
06	Sugars, sugar preparations and honey(b)	18	12	11	0.1	170 179
07	Coffee, tea, cocoa, spices, and manufactures thereof	19	20	20	0.2	262 251
08	Feeding stuff for animals (excl. unmilled cereals)(b)	62	67	70	0.6	851 788
09	Miscellaneous edible products and preparations	38	36	38	0.3	424 428
	<i>Total food and live animals</i>	<i>1 563</i>	<i>1 593</i>	<i>1 595</i>	<i>13.2</i>	<i>16 422 18 016</i>
1	Beverages and tobacco					
11	Beverages	237	241	238	2.0	2 379 2 588
12	Tobacco and tobacco manufactures	5	6	6	0.1	72 94
	<i>Total beverages and tobacco</i>	<i>242</i>	<i>247</i>	<i>245</i>	<i>2.0</i>	<i>2 450 2 682</i>
2	Crude materials, inedible, except fuels(b)					
21	Hides, skins and furskins, raw(b)	51	58	65	0.5	583 629
22	Oil seeds and oleaginous fruits	37	52	58	0.5	481 484
23	Crude rubber (incl. synthetic and reclaimed)	1	1	1	—	15 11
24	Cork and wood	83	89	100	0.8	897 950
25	Pulp and waste paper	10	10	11	0.1	50 93
26	Textile fibres and their wastes (not manufactured into yarn or fabric)(b)	232	252	348	2.9	3 102 2 962
27	Crude fertilisers (excl. those of Division 56) and crude minerals (excl. coal, petroleum and precious stones)	40	50	47	0.4	396 431
28	Metalliferous ores and metal scrap(b)	1 649	1 923	2 009	16.6	12 972 17 182
29	Crude animal and vegetable materials, n.e.s.	22	23	24	0.2	221 266
	<i>Total crude materials, inedible, except fuels</i>	<i>2 125</i>	<i>2 457</i>	<i>2 663</i>	<i>22.1</i>	<i>18 716 23 008</i>
3	Mineral fuels, lubricants and related materials					
32	Coal, coke and briquettes	1 266	1 758	1 852	15.3	9 822 15 130
33	Petroleum, petroleum products and related materials	730	734	794	6.6	6 105 7 416
34	Gas, natural and manufactured	320	364	371	3.1	2 570 3 679
	<i>Total mineral fuels, lubricants and related materials</i>	<i>2 316</i>	<i>2 856</i>	<i>3 017</i>	<i>25.0</i>	<i>18 497 26 225</i>

— nil or rounded to zero (including null cells)

(b) Excludes exports commodities subject to a confidentiality restriction. These are included in Division 98.

(a) Per cent of total merchandise exports is calculated for the most recent month.

				Per cent of total merchandise exports(a)	11 MONTHS ENDED MAY		
	Mar	Apr	May		.....		
	2005	2005	2005		2004	2005	
	\$m	\$m	\$m	%	\$m	\$m	
SECTION AND DIVISION OF THE SITC							
4	Animal and vegetable oils, fats and waxes(b)						
41	Animal oils and fats	20	14	17	0.1	228	194
42	Fixed vegetable fats and oils, crude, refined or fractionated(b)	5	8	3	—	49	54
43	Fats and oils (processed), waxes and inedible mixtures or preparations, of animal or vegetable origin, n.e.s.	5	5	6	—	51	59
	<i>Total animal and vegetable oils, fats and waxes</i>	30	26	26	0.2	329	307
5	Chemicals and related products, n.e.s.(b)						
51	Organic chemicals(b)	9	8	12	0.1	106	119
52	Inorganic chemicals(b)	40	51	62	0.5	479	490
53	Dyeing, tanning and colouring materials	57	49	57	0.5	555	565
54	Medicinal and pharmaceutical products	245	257	277	2.3	2 189	2 561
55	Essential oils and resinoids and perfume materials; toilet, polishing and cleansing preparations	40	41	43	0.4	383	398
56	Fertilisers (excl. crude)	4	27	7	0.1	138	154
57	Plastics in primary forms(b)	27	26	25	0.2	180	251
58	Plastics in non-primary forms	27	24	28	0.2	237	272
59	Chemical materials and products, n.e.s.	47	51	61	0.5	531	569
	<i>Total chemicals and related products, n.e.s.</i>	494	533	572	4.7	4 799	5 378
6	Manufactured goods classified chiefly by material(b)						
61	Leather, leather manufactures, and dressed furskins, n.e.s.	38	34	39	0.3	433	411
62	Rubber manufactures, n.e.s.	17	14	14	0.1	128	146
63	Cork and wood manufactures (excl. furniture)(b)	23	19	25	0.2	191	222
64	Paper, paperboard, and articles of paper pulp, of paper or of paperboard	61	66	66	0.5	678	669
65	Textile yarn, fabrics, made-up articles, n.e.s., and related products	38	34	38	0.3	417	398
66	Non-metallic mineral manufactures, n.e.s.(b)	65	53	71	0.6	760	781
67	Iron and steel(b)	49	67	63	0.5	860	648
68	Non-ferrous metals	669	793	646	5.4	6 130	7 288
69	Manufactures of metals, n.e.s.	72	75	73	0.6	676	764
	<i>Total manufactured goods classified chiefly by material</i>	1 034	1 155	1 035	8.6	10 274	11 326
7	Machinery and transport equipment(b)						
71	Power generating machinery and equipment	85	88	92	0.8	767	924
72	Machinery specialised for particular industries	112	112	126	1.0	1 038	1 133
73	Metal working machinery	15	9	17	0.1	130	143
74	General industrial machinery and equipment, n.e.s. and machine parts, n.e.s.(b)	118	127	136	1.1	1 102	1 309
75	Office machines and automatic data processing machines	100	97	93	0.8	1 115	1 039
76	Telecommunications and sound recording and reproducing apparatus and equipment	74	70	73	0.6	693	842
77	Electrical machinery, apparatus, appliances, parts (incl. non-electrical counterparts of electrical domestic equipment)	127	124	135	1.1	1 330	1 448
78	Road vehicles (incl. air-cushion vehicles)	341	330	379	3.1	3 783	3 529
79	Transport equipment (excl. road vehicles)	85	212	70	0.6	940	942
	<i>Total machinery and transport equipment</i>	1 057	1 170	1 121	9.3	10 898	11 309

— nil or rounded to zero (including null cells)

(a) Per cent of total merchandise exports is calculated for the most recent month.

(b) Excludes exports commodities subject to a confidentiality restriction. These are included in Division 98.

				Per cent of total merchandise exports(a)	11 MONTHS ENDED MAY	
	Mar	Apr	May		.....	
	2005	2005	2005		2004	2005
	\$m	\$m	\$m	%	\$m	\$m
SECTION AND DIVISION OF THE SITC						
8	Miscellaneous manufactured articles(b)					
81	Prefabricated buildings; sanitary, plumbing, heating and lighting fixtures and fittings, n.e.s.					
	11	11	9	0.1	86	100
82	Furniture, parts thereof; bedding, mattresses, mattress supports, cushions and similar stuffed furnishings					
	13	12	10	0.1	128	121
83	Travel goods, handbags and similar containers					
	2	2	2	—	19	21
84	Articles of apparel and clothing accessories					
	28	26	25	0.2	281	264
85	Footwear(b)					
	5	4	4	—	43	41
87	Professional, scientific and controlling instruments and apparatus, n.e.s.					
	119	126	139	1.2	1 107	1 278
88	Photographic apparatus, equipment and supplies and optical goods, n.e.s.; watches and clocks					
	30	30	25	0.2	514	419
89	Miscellaneous manufactured articles, n.e.s.					
	163	162	178	1.5	1 718	1 762
	<i>Total miscellaneous manufactured articles</i>					
	370	373	392	3.2	3 895	4 007
9	Commodities and transactions not classified elsewhere in the SITC(c)(d)					
93	Special transactions and commodities not classified according to kind					
	207	163	184	1.5	2 026	1 745
95	Gold coin whether or not legal tender, and other coin being legal tender					
	9	6	10	0.1	88	110
96	Coin (excl. gold coin), not being legal tender					
	—	—	—	—	—	1
97	Gold, non-monetary (excl. gold ores and concentrates)					
	368	433	654	5.4	5 292	5 298
98	Combined confidential items excl. some of SITC 280 (exports only) and some of SITCs 510 and 520 (imports only)(c)(d)					
	554	455	555	4.6	4 879	5 487
	<i>Total commodities and transactions not classified elsewhere in the SITC</i>					
	1 139	1 056	1 403	11.6	12 285	12 641
<b>Total Merchandise Exports</b>						
	<b>10 369</b>	<b>11 465</b>	<b>12 068</b>	<b>100.0</b>	<b>98 566</b>	<b>114 901</b>
Balance of Payments Adjustments						
	76	48	82	. .	356	758
Goods Credits (exports) on a Balance of Payments Basis						
	10 445	11 513	12 150	. .	98 922	115 659

. . not applicable

— nil or rounded to zero (including null cells)

(a) Per cent of total merchandise exports is calculated for the most recent month.

(b) Excludes exports commodities subject to a confidentiality restriction. These are included in Division 98.

(c) Includes exports commodities subject to a confidentiality restriction.

(d) Includes small value export entries which can not yet be allocated by commodity.

## INTERNATIONAL MERCHANDISE IMPORTS, By commodity

				Per cent of total merchandise imports(a)	11 MONTHS ENDED MAY	
	Mar	Apr	May		.....	
	2005	2005	2005		2004	2005
	\$m	\$m	\$m	%	\$m	\$m
MAJOR COMMODITIES						
333 Crude petroleum oils	1 043	893	822	6.4	5 716	8 808
334 Refined petroleum oils	356	471	641	5.0	3 020	4 305
542 Medicaments	548	453	461	3.6	4 472	5 209
641 Paper and paperboard	176	169	160	1.2	1 865	1 909
752 Automatic data processing machines	531	499	575	4.5	4 503	5 164
759 Parts and accessories of office machines	180	174	191	1.5	1 933	1 947
764 Telecommunications equipment	423	400	409	3.2	3 885	4 592
781 Passenger motor vehicles	967	1 104	982	7.7	10 127	10 466
782 Motor vehicles for the transport of goods	343	356	410	3.2	2 787	3 661
784 Parts and accessories of motor vehicles	192	205	186	1.5	1 913	2 093
792 Aircraft and associated equipment	415	187	315	2.5	3 368	3 403
971 Gold, non-monetary	200	215	263	2.0	2 329	2 202

## SECTION AND DIVISION OF THE SITC

0	Food and live animals						
00	Live animals other than fish, crustaceans, molluscs and aquatic invertebrates	10	5	3	—	64	81
01	Meat and meat preparations	39	41	43	0.3	231	339
02	Dairy products and birds' eggs	33	33	29	0.2	290	339
03	Fish (not marine mammals), crustaceans, molluscs and aquatic invertebrates, and preparations thereof	83	74	74	0.6	835	890
04	Cereals and cereal preparations	31	31	31	0.2	325	375
05	Vegetables and fruit	86	82	86	0.7	892	1 004
06	Sugars, sugar preparations and honey	15	13	14	0.1	160	162
07	Coffee, tea, cocoa, spices, and manufactures thereof	55	58	55	0.4	583	647
08	Feeding stuff for animals (excl. unmilled cereals)	29	23	22	0.2	243	253
09	Miscellaneous edible products and preparations	77	116	81	0.6	967	1 042
	<i>Total food and live animals</i>	458	476	438	3.4	4 590	5 131
1	Beverages and tobacco						
11	Beverages	69	56	55	0.4	674	756
12	Tobacco and tobacco manufactures	13	21	18	0.1	163	166
	<i>Total beverages and tobacco</i>	82	77	73	0.6	838	923
2	Crude materials, inedible, except fuels						
21	Hides, skins and furskins, raw	—	—	—	—	3	2
22	Oil seeds and oleaginous fruits	3	3	8	0.1	70	52
23	Crude rubber (incl. synthetic and reclaimed)	13	13	12	0.1	117	135
24	Cork and wood	55	55	48	0.4	546	573
25	Pulp and waste paper	19	25	16	0.1	210	210
26	Textile fibres and their wastes (not manufactured into yarn or fabric)	12	12	12	0.1	139	141
27	Crude fertilisers (excl. those of Division 56) and crude minerals (excl. coal, petroleum and precious stones)	17	17	16	0.1	180	160
28	Metalliferous ores and metal scrap	28	23	34	0.3	260	266
29	Crude animal and vegetable materials, n.e.s.	22	20	21	0.2	236	249
	<i>Total crude materials, inedible, except fuels</i>	168	167	166	1.3	1 759	1 787
3	Mineral fuels, lubricants and related materials(b)						
32	Coal, coke and briquettes	1	1	2	—	14	17
33	Petroleum, petroleum products and related materials(b)	1 433	1 393	1 494	11.6	8 992	13 465
34	Gas, natural and manufactured	—	—	25	0.2	132	117
	<i>Total mineral fuels, lubricants and related materials</i>	1 434	1 394	1 521	11.8	9 138	13 600

— nil or rounded to zero (including null cells)

(a) Per cent of total merchandise imports is calculated for the most recent month.

(b) Excludes imports commodities subject to a confidentiality restriction. These are included in Division 98.

				Per cent of total merchandise imports(a)	11 MONTHS ENDED MAY		
	Mar	Apr	May		.....		
	2005	2005	2005		2004	2005	
	\$m	\$m	\$m	%	\$m	\$m	
SECTION AND DIVISION OF THE SITC							
4	Animal and vegetable oils, fats and waxes						
41	Animal oils and fats	1	1	3	—	22	17
42	Fixed vegetable fats and oils, crude, refined or fractionated	34	24	26	0.2	278	288
43	Fats and oils (processed), waxes and inedible mixtures or preparations, of animal or vegetable origin, n.e.s.	5	4	3	—	37	42
	<i>Total animal and vegetable oils, fats and waxes</i>	40	29	32	0.2	338	347
5	Chemicals and related products, n.e.s.(b)						
51	Organic chemicals	284	244	257	2.0	2 128	2 545
52	Inorganic chemicals(b)	82	79	87	0.7	629	808
53	Dyeing, tanning and colouring materials	46	42	42	0.3	468	493
54	Medicinal and pharmaceutical products	669	538	578	4.5	5 395	6 323
55	Essential oils and resinoids and perfume materials; toilet, polishing and cleansing preparations	115	111	112	0.9	1 119	1 252
56	Fertilisers (excl. crude)	107	207	67	0.5	667	968
57	Plastics in primary forms	117	112	106	0.8	1 069	1 208
58	Plastics in non-primary forms	91	89	84	0.7	923	1 034
59	Chemical materials and products, n.e.s.	140	141	141	1.1	1 319	1 431
	<i>Total chemicals and related products, n.e.s.</i>	1 652	1 562	1 472	11.5	13 717	16 061
6	Manufactured goods classified chiefly by material(b)						
61	Leather, leather manufactures, and dressed furskins, n.e.s.	13	12	12	0.1	147	144
62	Rubber manufactures, n.e.s.(b)	165	173	154	1.2	1 566	1 726
63	Cork and wood manufactures (excl. furniture)	61	50	44	0.3	595	599
64	Paper, paperboard, and articles of paper pulp, of paper or of paperboard(b)	214	207	197	1.5	2 253	2 350
65	Textile yarn, fabrics, made-up articles n.e.s. and related products	178	187	190	1.5	2 241	2 240
66	Non-metallic mineral manufactures, n.e.s.	181	180	159	1.2	1 918	1 958
67	Iron and steel(b)	290	290	340	2.6	1 850	2 925
68	Non-ferrous metals(b)	119	77	80	0.6	890	922
69	Manufactures of metals, n.e.s.(b)	284	302	329	2.6	2 899	3 429
	<i>Total manufactured goods classified chiefly by material</i>	1 506	1 479	1 504	11.7	14 360	16 293
7	Machinery and transport equipment(b)						
71	Power generating machinery and equipment	345	332	359	2.8	2 687	3 261
72	Machinery specialised for particular industries	480	476	563	4.4	4 565	5 432
73	Metal working machinery	50	68	64	0.5	556	651
74	General industrial machinery and equipment, n.e.s. and machine parts, n.e.s.	657	603	642	5.0	6 337	7 514
75	Office machines and automatic data processing machines	757	717	815	6.3	6 851	7 654
76	Telecommunications and sound recording and reproducing apparatus and equipment	637	660	665	5.2	6 722	7 866
77	Electrical machinery, apparatus, appliances, parts (incl. non-electrical counterparts of electrical domestic equipment)(b)	630	604	609	4.7	6 362	7 051
78	Road vehicles (incl. air-cushion vehicles)	1 630	1 805	1 706	13.3	16 096	17 733
79	Transport equipment (excl. road vehicles)	452	234	357	2.8	4 137	4 004
	<i>Total machinery and transport equipment</i>	5 638	5 499	5 779	45.0	54 312	61 168

— nil or rounded to zero (including null cells)

(a) Per cent of total merchandise imports is calculated for the most recent month.

(b) Excludes imports commodities subject to a confidentiality restriction. These are included in Division 98.

INTERNATIONAL MERCHANDISE IMPORTS, By commodity *continued*

				Per cent of total merchandise imports(a)	11 MONTHS ENDED MAY	
	Mar 2005	Apr 2005	May 2005		2004	2005
	\$m	\$m	\$m	%	\$m	\$m
SECTION AND DIVISION OF THE SITC						
8	Miscellaneous manufactured articles(b)					
81	Prefabricated buildings; sanitary, plumbing, heating and lighting fixtures and fittings, n.e.s.	37	45	40	0.3	422 479
82	Furniture, parts thereof; bedding, mattresses, mattress supports, cushions and similar stuffed furnishings	118	141	143	1.1	1 439 1 762
83	Travel goods, handbags and similar containers	31	39	36	0.3	437 513
84	Articles of apparel and clothing accessories	288	342	270	2.1	3 097 3 608
85	Footwear	74	65	60	0.5	830 958
87	Professional, scientific and controlling instruments and apparatus, n.e.s.	313	289	318	2.5	2 861 3 277
88	Photographic apparatus, equipment and supplies and optical goods, n.e.s.; watches and clocks(b)	101	104	92	0.7	1 197 1 243
89	Miscellaneous manufactured articles, n.e.s.	549	647	617	4.8	6 778 7 101
	<i>Total miscellaneous manufactured articles</i>	<i>1 511</i>	<i>1 673</i>	<i>1 574</i>	<i>12.3</i>	<i>17 060 18 941</i>
9	Commodities and transactions not classified elsewhere in the SITC(c)					
93	Special transactions and commodities not classified according to kind	4	3	2	—	26 30
95	Gold coin whether or not legal tender, and other coin being legal tender	—	—	1	—	7 7
96	Coin (excl. gold coin), not being legal tender	—	—	—	—	1 18
97	Gold, non-monetary (excl. gold ores and concentrates)	200	215	263	2.0	2 329 2 202
98	Combined confidential items excl. some of SITC 280 (exports only) and some of SITCs 510 and 520 (imports only)(c)	14	13	11	0.1	215 172
	<i>Total commodities and transactions not classified elsewhere in the SITC</i>	<i>218</i>	<i>230</i>	<i>277</i>	<i>2.2</i>	<i>2 577 2 428</i>
	<b>Total Merchandise Imports</b>	<b>12 707</b>	<b>12 586</b>	<b>12 837</b>	<b>100.0</b>	<b>118 691 136 679</b>
	Balance of Payments Adjustment	-112	109	144	. .	1 607 1 167
	Goods Debits (imports) on a Balance of Payments Basis	12 595	12 695	12 981	. .	120 298 137 846

. . not applicable

— nil or rounded to zero (including null cells)

(a) Per cent of total merchandise imports is calculated for the most recent month.

(b) Excludes imports commodities subject to a confidentiality restriction. These are included in Division 98.

(c) Includes imports commodities subject to a confidentiality restriction.

	EXPORTS				IMPORTS				BALANCE OF MERCHANDISE TRADE	
	2003-04	May	11	11	2003-04	May	11	11	2003-04	11
		2005	May	months		months	May	May		months
	\$m	\$m	ended	ended	\$m	\$m	ended	ended	\$m	ended
			May	May			May	May		May
			2004	2005			2004	2005		2005
			\$m	\$m			\$m	\$m		\$m
Belgium(b)	676	83	617	790	1 237	109	1 138	1 073	-561	-283
Brazil	512	69	457	560	494	83	456	595	18	-35
Canada	1 828	122	1 660	1 707	1 818	154	1 651	1 757	10	-50
China	9 935	1 397	8 806	11 557	15 338	1 601	13 889	18 187	-5 403	-6 631
Denmark	167	16	154	154	856	85	769	976	-690	-822
Egypt(c)	649	37	608	276	36	1	33	13	614	263
Fiji	430	31	393	366	210	14	190	197	220	170
Finland	575	46	539	509	651	71	592	746	-76	-237
France	939	91	873	906	3 816	304	3 325	4 100	-2 877	-3 194
Germany	1 309	121	1 190	1 230	7 985	795	7 286	7 931	-6 676	-6 701
Hong Kong (SAR of China)	2 754	253	2 515	2 491	1 202	93	1 088	1 111	1 552	1 380
India	4 865	766	4 439	5 394	1 000	90	918	1 127	3 865	4 266
Indonesia	2 984	313	2 636	3 101	3 765	234	3 424	3 111	-781	-10
Iran	125	22	122	145	43	2	40	21	82	124
Iraq	315	1	269	382	—	—	—	6	315	376
Ireland	172	10	156	169	1 686	180	1 481	1 742	-1 514	-1 573
Israel	160	23	151	162	470	41	432	533	-310	-371
Italy	1 375	163	1 271	1 404	4 215	333	3 769	4 111	-2 840	-2 707
Japan	19 821	2 437	17 783	22 383	16 101	1 366	14 557	15 628	3 721	6 755
Korea, Republic of	8 490	982	7 724	8 879	4 877	425	4 433	4 560	3 613	4 319
Kuwait	580	33	544	421	110	25	110	122	470	299
Malaysia	2 224	178	1 995	2 326	4 707	571	4 168	5 415	-2 483	-3 089
Mexico	341	31	315	634	603	67	543	702	-262	-68
Netherlands	1 368	186	1 265	1 607	1 197	96	1 090	1 159	171	448
New Zealand	8 094	763	7 431	8 441	5 056	463	4 639	4 893	3 038	3 549
Pakistan	438	56	416	557	161	11	149	137	277	420
Papua New Guinea	809	111	750	1 073	1 422	73	1 310	1 534	-613	-461
Philippines	938	61	802	810	762	56	694	637	175	173
Saudi Arabia	1 992	191	1 810	1 678	757	153	747	1 219	1 235	458
Singapore	3 061	337	2 777	3 023	5 112	777	4 574	6 520	-2 051	-3 497
South Africa	1 427	174	1 304	1 490	1 246	148	1 137	1 201	182	289
Spain	659	99	586	829	1 103	97	998	1 214	-444	-384
Sweden	228	37	202	242	1 739	183	1 592	1 783	-1 511	-1 541
Switzerland	181	40	165	236	1 190	112	1 081	1 367	-1 009	-1 131
Taiwan	3 705	482	3 337	4 416	3 396	304	3 083	3 329	308	1 086
Thailand	2 463	290	2 177	3 506	3 669	420	3 336	3 785	-1 206	-280
Turkey	277	39	264	271	262	24	236	337	16	-66
United Arab Emirates	1 185	100	1 075	1 174	742	31	702	778	443	396
United Kingdom	5 147	342	4 773	4 476	5 429	574	4 960	5 431	-282	-955
United States of America	9 481	928	8 437	8 589	19 929	1 908	18 055	19 541	-10 448	-10 952
Viet Nam	512	73	428	666	2 019	229	1 865	2 857	-1 506	-2 192
Other Countries(d)	5 858	533	5 350	5 870	4 587	532	4 152	5 190	1 271	679
<b>Total</b>	<b>109 049</b>	<b>12 068</b>	<b>98 566</b>	<b>114 901</b>	<b>130 997</b>	<b>12 837</b>	<b>118 691</b>	<b>136 679</b>	<b>-21 947</b>	<b>-21 778</b>
APEC	77 838	8 811	69 947	84 080	91 075	8 862	82 488	94 900	-13 237	-10 820
ASEAN	12 273	1 266	10 899	13 563	20 551	2 354	18 523	22 990	-8 278	-9 427
Developing Countries	52 823	6 053	47 621	56 483	52 071	5 596	47 211	58 248	752	-1 764
Least Developed Countries	1 183	98	1 079	1 351	213	16	186	200	970	1 151
European Union(e)	12 951	1 229	11 937	12 623	31 500	3 000	28 433	32 157	-18 549	-19 534
OECD	61 426	6 564	55 678	63 758	81 841	7 567	74 096	81 406	-20 415	-17 648

— nil or rounded to zero (including null cells)

(a) See AusStats for details of all countries.

(b) Prior to July 2003, Belgium and Luxembourg were combined. Belgium-Luxembourg is included in 'Other Countries' up to and including June 2003.

(c) Exports of Alumina to Egypt are excluded from its country total and included in the 'Other countries' category.

(d) Includes small value export entries which can not yet be allocated by country.

(e) From July 2004, European Union includes 25 member countries.

	11 MONTHS ENDED MAY			
	2003-04	May 2005	2004	2005
	\$m	\$m	\$m	\$m
EXPORTS (a)				
New South Wales	19 091	2 126	17 008	20 984
Victoria	18 012	1 633	16 265	16 905
Queensland	20 128	2 707	18 065	23 429
South Australia	7 608	682	6 935	7 077
Western Australia	32 302	3 816	29 442	35 232
Tasmania	2 317	222	2 090	2 347
Northern Territory	1 883	227	1 720	2 044
Australian Capital Territory	1	—	1	—
State not available for publication(b)(c)	344	42	319	416
Re-exports	7 362	613	6 720	6 466
<b>Total exports</b>	<b>109 049</b>	<b>12 068</b>	<b>98 566</b>	<b>114 901</b>
IMPORTS				
New South Wales	53 763	5 115	48 682	55 005
Victoria	40 727	3 916	36 896	41 377
Queensland	18 079	1 780	16 343	19 792
South Australia	5 163	491	4 706	5 223
Western Australia	11 690	1 372	10 695	12 865
Tasmania	669	50	625	561
Northern Territory	899	110	740	1 828
Australian Capital Territory	7	4	5	28
<b>Total imports</b>	<b>130 997</b>	<b>12 837</b>	<b>118 691</b>	<b>136 679</b>

— nil or rounded to zero (including null cells)

(a) State in which the final stage of production or manufacture occurs.

(b) Includes exports which can not yet be allocated by state. These shipments will be appropriately classified as more details become available.

(c) Exports of Alumina to Bahrain, Egypt and Iceland are excluded from the state totals and included in 'State not available for publication' category.



## PERIOD AVERAGE EXCHANGE RATES (a): Per Australian dollar

<i>Period</i>	<i>United States dollar</i>	<i>United Kingdom pound</i>	<i>euro</i>	<i>Japanese yen</i>	<i>Trade-weighted index of value of the \$A(b)</i>
FINANCIAL YEAR					
<b>2001-02</b>	0.5239	0.3632	0.5850	66.10	50.7
<b>2002-03</b>	0.5848	0.3685	0.5577	70.01	53.5
<b>2003-04</b>	0.7137	0.4102	0.5981	78.91	61.5
MONTHS					
<b>2004</b>					
March	0.7498	0.4100	0.6110	81.45	63.6
April	0.7442	0.4121	0.6201	79.98	63.3
May	0.7054	0.3948	0.5874	79.01	60.9
June	0.6942	0.3794	0.5714	75.90	59.5
July	0.7164	0.3887	0.5835	78.29	61.1
August	0.7104	0.3903	0.5828	78.37	60.8
September	0.7013	0.3912	0.5743	77.20	59.9
October	0.7331	0.4057	0.5868	79.81	62.0
November	0.7689	0.4139	0.5925	80.61	63.7
December	0.7678	0.3981	0.5735	79.70	62.7
<b>2005</b>					
January	0.7647	0.4071	0.5830	78.98	62.7
February	0.7807	0.4139	0.5999	81.92	64.1
March	0.7859	0.4119	0.5948	82.62	64.2
April	0.7724	0.4078	0.5971	82.94	63.8
May	0.7662	0.4125	0.6033	81.68	63.4

(a) These exchange rates and the trade-weighted index are derived using rates provided by the Reserve Bank of Australia in respect of each trading day.

(b) May 1970=100. The trade-weighted index is reweighted annually (on 1 October) and on special occasions if required.

## EXPLANATORY NOTES

### INTRODUCTION

**1** This publication presents preliminary estimates of Australia's international trade in goods and services on a balance of payments basis and merchandise import and export statistics on a recorded trade basis.

**2** Merchandise trade statistics on a recorded trade basis are compiled from information submitted by exporters and importers or their agents to the Australian Customs Service (ACS). Adjustments for coverage, timing and valuation are made to recorded trade data to convert them to a balance of payments basis. The main source for services data is the quarterly Survey of International Trade in Services.

**3** More comprehensive quarterly estimates of Australia's trade in goods and services, together with comprehensive details of Australia's balance of payments are included in the quarterly publication, *Balance of Payments and International Investment Position, Australia* (cat. no. 5302.0). Detailed monthly statistics on merchandise trade are available on AusStats or by subscription to tailored services.

### CONCEPTS, SOURCES AND METHODS

**4** The conceptual framework used in compiling Australia's merchandise trade statistics can be found in *International Merchandise Trade, Australia: Concepts, Sources and Methods, 2001* (cat. no. 5489.0).

**5** The conceptual framework used in compiling Australia's balance of payments statistics is based on the Fifth Edition of the International Monetary Fund's *Balance of Payments Manual* (BPM5,1993). Descriptions of the underlying concepts and structure of the balance of payments and the sources, methods and terms used in compiling the estimates are presented in *Balance of Payments and International Investment Position, Australia: Concepts, Sources and Methods, 1998* (cat. no. 5331.0). To bring merchandise trade statistics on a recorded trade basis to a balance of payments basis, timing adjustments are made to ensure that the transaction is recorded in the period in which ownership changed, rather than in the period in which the transaction was recorded by ACS. Adjustments are also made to imports to take account of distortions which arise when significant changes occur in the volume of import entries lodged but not yet processed by ACS in a given month. Chapter 6 of cat. no. 5331.0 provides more detail on the relationship between statistics on international merchandise trade on a recorded trade basis and on a balance of payments basis.

**6** Both of the Concepts, Sources and Methods publications are available for free from the ABS web site, see <<http://www.abs.gov.au>> – select *About Statistics* then *Concepts & Classifications*.

### SEASONAL ADJUSTMENT

**7** Monthly original estimates are volatile, being subject to calendar-related and large irregular influences. Seasonally adjusted estimates are derived by estimating and removing systematic calendar related effects, such as seasonal and trading day influences, from the original series. Trading day effects are removed from the original estimates prior to the seasonal adjustment process. Seasonal adjustment does not aim to remove the irregular or non-seasonal influences which may be present in any particular month. These irregular influences may reflect both random economic events and difficulties of statistical recording. The estimates of international trade in goods and services on a balance of payments basis are seasonally adjusted. The merchandise exports and imports statistics on a recorded trade basis are not.

### TREND ESTIMATES

**8** The month-to-month movements of the seasonally adjusted estimates may not be reliable indicators of trend behaviour because they include irregular or non-seasonal movements. Trend estimates are derived by applying a 13-term Henderson moving average to the seasonally adjusted series. The use of a 13-term Henderson average can result in revisions to the estimates for the most recent six months as additional observations become available. Revisions can also occur because of changes in the original data and as a result of the annual re-estimation of the seasonal factors.

## EXPLANATORY NOTES *continued*

### SIGN CONVENTION

**9** In keeping with balance of payments conventions, where statistics are on a balance of payments basis, credit entries (exports) are shown without sign and debit items (imports) are shown as negative entries. For statistics on a recorded trade basis, both imports and exports are shown without sign. The calculation of percentage changes on balance of payments debit items are made without regard to sign. References to balance of payments debit items in Key Figures, Key Points, and Analysis and Comments are also made without regard to sign.

### COMMODITY BREAKDOWNS OF GOODS

**10** For details of the classification used for goods exports on a balance of payments basis (credits), see table 6.6 in *Balance of Payments and International Investment Position, Australia: Concepts, Sources and Methods, 1998* (cat. no. 5331.0).

**11** Details of the classification of goods imports on a balance of payments basis (debits) are provided in table 6.7 in cat. no. 5331.0. Most of the commodity groups shown in table 4 for goods debits are available for more detailed subgroups from AusStats.

**12** The recorded trade statistics shown in tables 8 and 9 are classified by the Standard International Trade Classification 2 (SITC). The first section of tables 8 and 9 show the most significant commodities (by value) at the SITC 3 digit level.

### COMMODITY BREAKDOWNS OF SERVICES

**13** The quarterly detailed services data published in table 7 are consistent with the monthly aggregates shown in table 5. Services trade data by major partner countries and by Australian state of production/consumption are published on a financial year basis and a calendar year basis.

**14** Monthly indicators for many of the services components that are only surveyed quarterly are not available. In particular, the Freight and Other transportation components of Total services credits are not available for publication on a monthly basis. The estimates for these items shown in table 5 are therefore derived by dividing the quarterly estimate by three. Where quarterly survey data are not available, freight debits are derived directly from imports data for the reference month as a difference between total merchandise cost, insurance and freight (CIFE) and free on board (FOB), adjusted to reflect timing and processing adjustments. For freight credits and other transportation credits and debits, estimates are derived by extrapolating the last month's data by an average of movements for the same month over the three previous years.

### TOURISM RELATED SERVICES

**15** The tourism related services memorandum items provide timely indicators of the movements in tourism related activities, not an absolute measure of the level of these activities. These series are not compiled on a Balance of Payments conceptual basis. However, they do provide a reasonable approximation of world tourism related activities.

**16** The memorandum items have been derived by re-aggregating relevant components of the international trade in services series of the balance of payments accounts. The tourism related indicator has been derived by combining total travel services (business, education-related and other personal travel), passenger fares, and the air transport component of other transportation services which relates to agency fees and commission receipts.

### SERVICES BY STATE AND BY PARTNER COUNTRY

**17** Annual services data by state and by partner country are released twice yearly. Calendar year data are released with the March issue of this publication and financial year data are released with the November issue. The data are available from AusStats.

**18** Services credits are classified by the state of provision, while services debits are classified by the state of consumption. The state allocations for transportation, travel and communication services are based on a number of indicators including merchandise trade statistics by state, overseas passenger arrivals and departures by state of clearance and data provided by the Department of Education, Science and Training. The allocation

## EXPLANATORY NOTES *continued*

### SERVICES BY STATE AND BY PARTNER COUNTRY *continued*

for other services (about 25% of all trade in services) is primarily based on the location of the business reporting the information, which serves as a proxy for the state of provision/consumption of that service. The data should be used with care but are considered suitable for analysis over time.

**19** A comprehensive explanation of the data sources used and the methodology applied in the compilation of partner country statistics is provided in Chapter 17 of *Balance of Payments and International Investment Position, Australia - Concepts, Sources and Methods* (cat. no. 5331.0). Approximately 9% of total services credits and 5% of total services debits for 2003-4 are either confidential, or unable to be allocated to individual countries.

### RELATED PRODUCTS OR SERVICES

**20** More detailed balance of payments and recorded merchandise trade data, including forward seasonal factors, are available from AusStats. Very detailed merchandise trade data by commodity, country and state are available by contacting the National Information and Referral Service, as shown on the back of this publication.

**21** Users may also wish to refer to the following publications which are available from ABS Bookshops and on the ABS web site:

- *Balance of Payments and International Investment Position, Australia* (cat. no. 5302.0) – issued quarterly
- *International Merchandise Imports, Australia* (cat. no. 5439.0) – issued monthly
- *International Trade Price Indexes, Australia* (cat. no. 6457.0) – issued quarterly
- *Balance of Payments and International Investment Position, Australia: Concepts, Sources and Methods* (cat. no. 5331.0)
- *Information Paper: Quality of Australian Balance of Payments Statistics* (cat. no. 5342.0)
- *International Merchandise Trade, Australia: Concepts, Sources and Methods* (cat. no. 5489.0)
- *A Guide to Australian Balance of Payments and International Investment Position Statistics* (cat. no. 5362.0.55.001).

**22** The last four publications are available for free on the ABS web site <<http://www.abs.gov.au>> – select *About Statistics* then *Concepts & Classifications*.

### CAUTIONARY NOTE

**23** The tables in this publication are presented on two bases. Tables 1–7 contain estimates of Australia's international trade in goods and services which have been adjusted for coverage, valuation and timing to a balance of payments basis. Tables 8–11 contain estimates of merchandise exports and imports based on Australian Customs Service records. Paragraph 5 of the Explanatory Notes provides an explanation of the difference between these bases.

### ABBREVIATIONS

\$b	billion (thousand million) dollars
\$m	million dollars
ABS	Australian Bureau of Statistics
APEC	Asia Pacific Economic Co-operation
ASEAN	Association of South-East Asian Nations
n.e.s.	not elsewhere specified
n.i.e.	not included elsewhere
OECD	Organisation for Economic Co-operation and Development
SAR	Special Administrative Region
SITC	Standard International Trade Classification

## APPENDIX RELATED ARTICLES

<i>Article</i>	<i>Source</i>	<i>Issue</i>
<b>Investment</b>		
Kangaroo bonds	5302.0	Sep qtr 2004
Foreign ownership of equity	5302.0	Sep qtr 2004
Gross external debt	5302.0	Sep qtr 2003
Measuring Australia's foreign currency exposure	5302.0	Dec qtr 2001
<b>Balance of payments</b>		
International comparison of balance of payments statistics	5363.0	1999–2000
The Sydney Olympic Games Update	5368.0	Jul 2000
The Sydney Olympic Games	5302.0	Sep qtr 1999
<b>Merchandise trade</b>		
Australia's Importers, 2003–04	(a) web site	Nov 2004
Australia's Exporters, 2003–04	(a) web site	Oct 2004
Australia's Trade with the USA	(a) web site	Mar 2004
Australia's Exporters, 2002–03	(a) web site	Oct 2003
Australia's Importers, 2002–03	(a) web site	Nov 2003
Export and import currencies, 2003	(a) web site	May 2003
Australia's exporters and importers, 2001–02	5422.0	Dec qtr 2002
Trade through Australia's ports	5422.0	Sep qtr 2002
Australia's trade in wine	5422.0	Dec qtr 2001
Australia's export markets, 1991–92 to 2000–01	5422.0	Jun qtr 2001
Major commodities traded by Australia, 1991 to 2000	5422.0	Dec qtr 2000
Australia's trade in crude petroleum	5422.0	Mar qtr 2000
Australia's merchandise trade with the Republic of Korea	5422.0	Sep qtr 1999
Australia's merchandise trade with Japan	5422.0	Mar qtr 1999
Bilateral merchandise trade statistics reconciliation: Australia and the European Union, 1992 to 1997	5422.0	Sep qtr 1998
<b>Trade in services</b>		
International trade in services by partner country, 2003–04	(a) web site	Nov 2004
International trade in services by State, 2003–04	(a) web site	Nov 2004
International trade in services by partner country, 2003	(a) web site	Mar 2004
International trade in services by State, 2003	(a) web site	Mar 2004
International trade in services by partner country, 2002–03	(a) web site	Oct 2003
International trade in services by State, 2002–03	(a) web site	Oct 2003
Goods and services by region, 2001	5368.0	Feb 2002
International trade in education services	(a) web site	Oct 2002
<b>Finance</b>		
Recent trends in construction and first home buyers finance	5609.0	Mar 2002
Household sector data in the financial accounts	5232.0	Mar qtr 2002
Investment Managers	5655.0	Jun qtr 2000
Venture capital, 1999–2000	5611.0	2000–01
Impact of 2003–2004 farm season on Australian production	5611.0	1999–2000
<b>Globalisation</b>		
Foreign Ownership of Australian Exporters and Importers, 2002–03	5496.0.55.001	2002–03
Australian Outward Foreign Affiliates Trade, 2002–03	5495.0	2002–03
Economic Activity of Foreign Owned Businesses in Australia, 2000–01	5494.0	2000–01
<b>Technical information</b>		
Implementation of New Customs Systems	(a) web site	Aug 2004
Changes to country and port classifications	5368.0	May 2003
The effect of customs changes on export statistics	5422.0	Jun qtr 2002
Harmonized system changes	5422.0	Sep qtr 2001
International trade review: data quality and client queries	5422.0	Jun qtr 2000
Data confidentiality	5422.0	Dec qtr 1999

(a) International Trade Theme Page: Select Themes; Economy; International Trade; Topics of Interest.





## FOR MORE INFORMATION . . .

- INTERNET* **www.abs.gov.au** the ABS web site is the best place to start for access to summary data from our latest publications, information about the ABS, advice about upcoming releases, our catalogue, and Australia Now—a statistical profile.
- LIBRARY* A range of ABS publications is available from public and tertiary libraries Australia-wide. Contact your nearest library to determine whether it has the ABS statistics you require, or visit our web site for a list of libraries.
- CPI INFOLINE* For current and historical Consumer Price Index data, call 1902 981 074 (call cost 77c per minute).
- DIAL-A-STATISTIC* This service now provides only current Consumer Price Index statistics call 1900 986 400 (call cost 77c per minute).

## INFORMATION SERVICE

Data already published that can be provided within five minutes will be free of charge. Our information consultants can also help you to access the full range of ABS information—ABS user pays services can be tailored to your needs, time frame and budget. Publications may be purchased. Specialists are on hand to help you with analytical or methodological advice.

- PHONE* 1300 135 070
- EMAIL* [client.services@abs.gov.au](mailto:client.services@abs.gov.au)
- FAX* 1300 135 211
- POST* Client Services, ABS, GPO Box 796, Sydney NSW 2001

## FREE ACCESS TO PUBLICATIONS

All ABS publications can be downloaded free of charge on the ABS web site.

- WEB ADDRESS* [www.abs.gov.au](http://www.abs.gov.au)



2536800005054

ISSN 1328 2778

RRP \$23.00